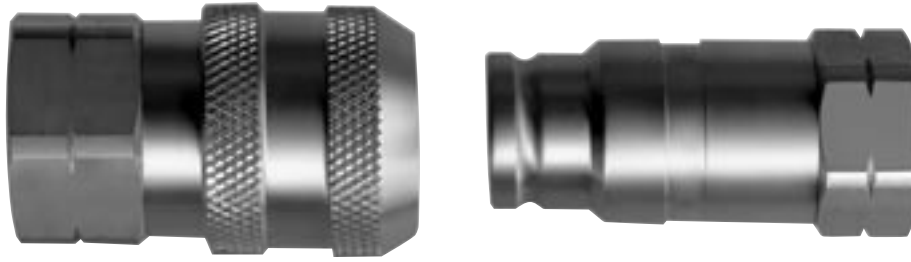


# Series DB

## 316 Stainless Steel Flat Face



The Series DB is designed for fluid handling where minimum spillage and minimum air inclusion are required. Couplings in this series are constructed of 316L stainless steel, which makes them suitable for use in chemical, pharmaceutical and food processing industries. Body sizes are 1/4", 3/8", 1/2", 3/4" and 1".

### Features

- Ball lock
- Push-to-connect
- Minimal fluid loss when disconnecting
- Minimal air inclusion when connecting
- High flow capacity
- NPTF and BSPP threads available.

### Standard Materials

- 316L stainless steel construction
- Viton seals

### Options

- Various seal materials available.

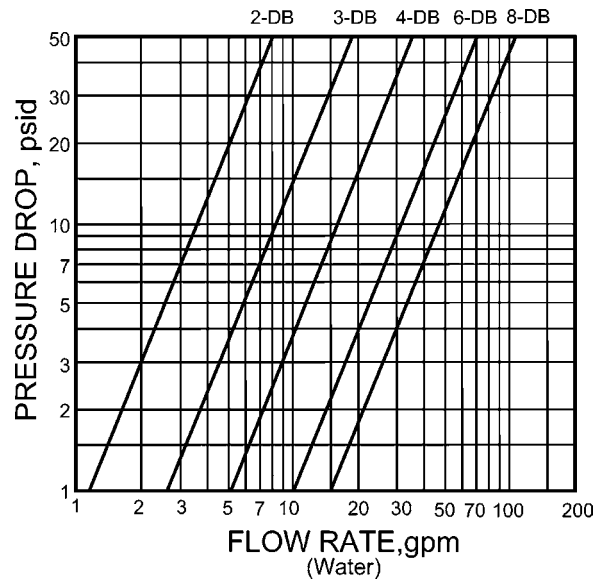
TWO-WAY

### Rated Pressure

Body Size	Socket		Plug		Connected	
	PSI	BAR	PSI	BAR	PSI	BAR
1/4"-1"	1,450	100	2,030	140	2,030	140

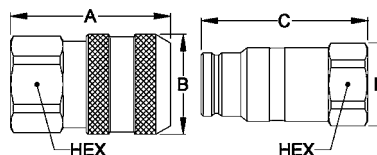
### Spillage & Air Inclusion

Body Size	Spillage Max. per Disconnect	Air Inclusion Max. per Connect
1/4"	.01 ml	.01 ml
3/8"	.02 ml	.02 ml
1/2"	.02 ml	.02 ml
3/4"	.02 ml	.03 ml
1"	.04 ml	.13 ml



### Sockets

Body Size (inch)	Part No.	Thread Size (Female)	Dimensions		
			A	B	HEX
1/4	2DBS-25F	1/4-18 NPTF	1.98	1.02	0.88
1/4	2DBS-25FBS	1/4-19 BSPP	1.98	1.02	0.88
3/8	3DBS-37F	3/8-18 NPTF	2.36	1.27	1.00
3/8	3DBS-37FBS	3/8-19 BSPP	2.36	1.27	1.00
1/2	4DBS-50F	1/2-14 NPTF	2.52	1.59	1.38
1/2	4DBS-50FBS	1/2-14 BSPP	2.52	1.59	1.38
3/4	6DBS-75F	3/4-14 NPTF	3.71	2.00	1.50
3/4	6DBS-75FBS	3/4-14 BSPP	3.71	2.00	1.50
1	8DBS-100F	1-11 1/2 NPTF	3.52	2.25	1.81
1	8DBS-100FBS	1-11 BSPP	3.52	2.25	1.81



### Plugs

Body Size (inch)	Part No.	Thread Size (Female)	Dimensions		
			C	D	HEX
1/4	2DBP-25F	1/4-18 NPTF	1.65	0.94	0.81
1/4	2DBP-25FBS	1/4-19 BSPP	1.65	0.94	0.81
3/8	3DBP-37F	3/8-18 NPTF	2.34	1.08	0.94
3/8	3DBP-37FBS	3/8-19 BSPP	2.34	1.08	0.94
1/2	4DBP-50F	1/2-14 NPTF	2.63	1.37	1.18
1/2	4DBP-50FBS	1/2-14 BSPP	2.63	1.37	1.18
3/4	6DBP-75F	3/4-14 NPTF	3.68	1.88	1.63
3/4	6DBP-75FBS	3/4-14 BSPP	3.68	1.88	1.63
1	8DBP-100F	1-11 1/2 NPTF	3.52	2.08	1.81
1	8DBP-100FBS	1-11 BSPP	3.52	2.08	1.81

All dimensions in inches.